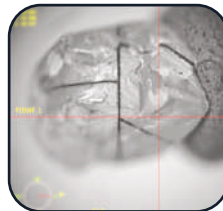
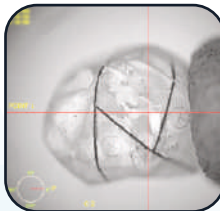
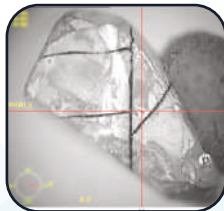
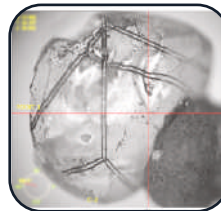
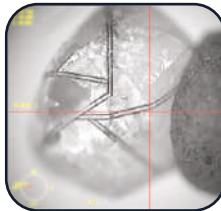
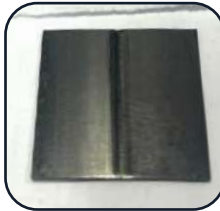


MultiSaw Green



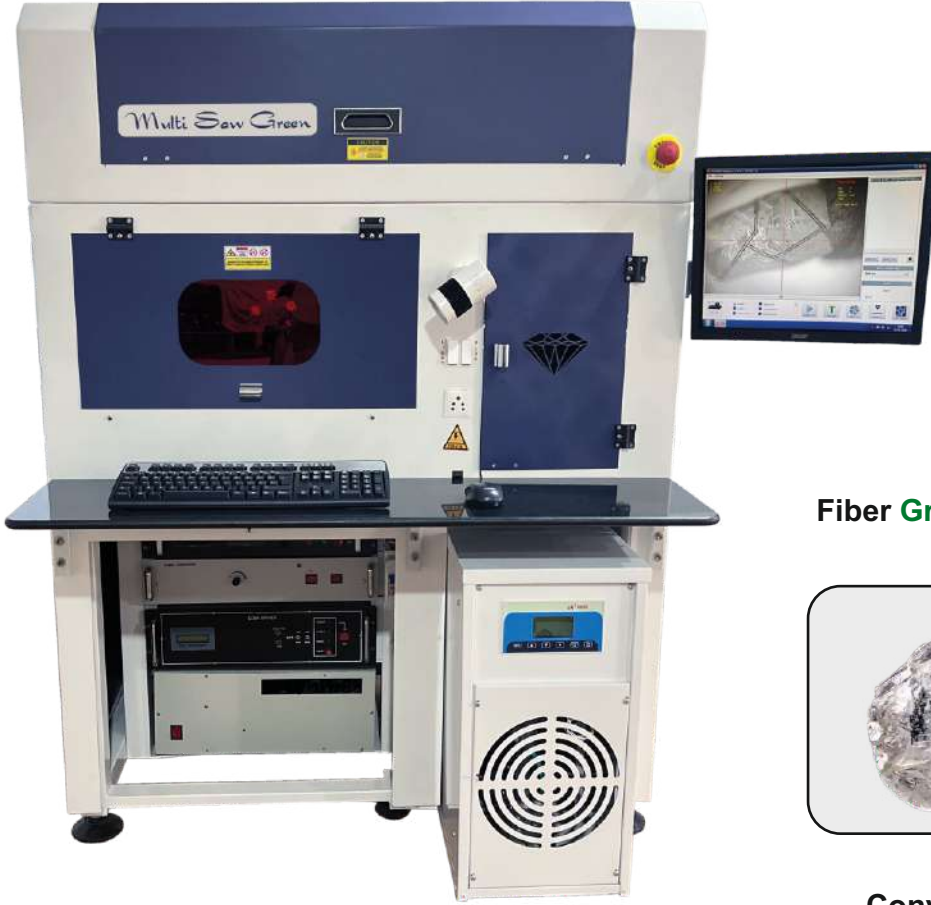
Slice Cutting

Multi Top Sawing

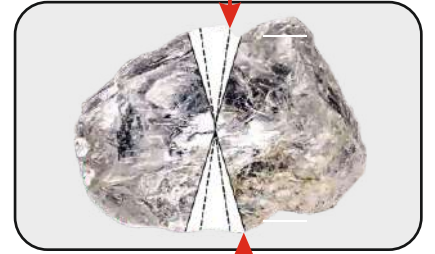
Normal Sawing

PIE Sawing

MultiSaw Green



Fiber Green Laser opening



Conventional Green Laser opening

Salient Features

- **UV Glue** ની જરૂરીયાત નહિ
- પરંપરાગત કટીંગ માં થતી નુકશાની કરતાં ઓછું નુકશાન ગ્રીન લેસર સાથે
- ચાલુમાં હિરા ઉખડવાના પ્રોબ્લેમથી છુટકારો
- કટીંગ કરેલ સરફેસ ઉપર સૌથી ઓછો કાર્બન અવશેષ
- સિંગલ સ્ટીકીંગ માં મલ્ટી ટોપ સોઇંગ
- એક્ઠમ લીસી સપાટી
- ઓછુ રોકાણ, વધુ વળતર
- No Requirement of **UV Glue**
- Less opening loss than conventional Green Laser.
- No more Diamond Detachment Problem during cutting Process
- Less carbon residuals on cutting surface.
- Multi Top Sawing in Single Sticking
- Extreme smooth surface.
- Lower Investment, Greater Yield

ઓપરેટર દ્વારા થતું ફાસ્ટ સેટિંગ સોફ્ટવેર

Machine Specification

CNC System

<p>Axis Travel Accuracy Repeatability Straightness & Flatness of Travel Drive</p>	<p>X-135 * Y-135 * Z-70mm 2 Micron 5 Micron/25mm Bidirectional 5 Micron/25mm AC Servo</p>
<p>PC Specification</p>	<p>Intel Core i3 Processor, 4GB RAM, 1TB HDD, 17" Square LED Screen, 450 Watt SMPS</p>
<p>Machine Power Consumption</p>	<p>1 Ø, 230 Volts AC, 12 Amps</p>
<p>Chiller</p>	<p>Cooling Capacity - 1200 Watt Power Consumption - 1 Ø, 230 Volts, 8 Amps</p>
<p>Operating Temperature</p>	<p>18 to 30 °C</p>
<p>RF Q-Switch Driver</p>	<p>27MHZ, 50 Watt Output Power, Modulation Frequency Auto, Manual 1k to 25KHZ Frequency Range, Thermal Cutoff protection, FPS System</p>
<p>Power Supply (Diode Driver)</p>	<p>30 AMP - 30 Volts DC, High Stability Power Control</p>
<p>Dimension of </p>	<p>Len : 45" * Wdth : 28" * Hgt : 60", Wgt : ~435kg</p>

Laser Specification

Laser	End Pump Green Laser
Central Emission Wavelength	532nm
Transverse Mode	TEM ₀₀
Q-Switched Output Power	Upto 24 Watt @ 10Khz
Pulse to Pulse Stability	(% rms) < 1.6 % @ 6Khz
Beam Polarization	Linear
Beam Pointing Stability	15 μ Rad
Pulse Repetition Rate	1 - 20Khz
Laser Class	IV

Contact us for Sample Cutting and Further Details

Contact us

+ 91 99798 85545 / 98793 74747 / 99797 30788 +91 261 2567273 / 2547373

Plot No.104, Nr.Dharmaj Circle, Dharmaj Compound, A.K.Road, Surat-395008, Gujarat, India.

www.dharmaj.in contact@dharmaj.in Follow us on [YouTube](#) [Facebook](#) [Twitter](#) [LinkedIn](#) [Instagram](#)

Shown content with photographs in this document are associated with "Dharmaj Technologies" & Group Companies.

© Copyright Mar-2024 Dharmaj Technologies All Rights Reserved. Patent Pending.